



Version 2009.0 Release Notes

2009. Overview

SolidView/Pro Version 2009 is a completely redesigned program that incorporates the most popular features of the previous versions of SolidView along with a modern user interface, enhanced measurements, and exciting new analysis tools. The new architecture embedded in SolidView 2009 will make it easier to enhance SolidView in the future as well as deliver SolidView components that can be integrated into web applications.

The initial release of the 2009 SolidView family of products includes SolidView/Lite, SolidView and SolidView/Pro. The initial 2009 release will not include the SolidView/Pro RP product.

2009 Eligibility

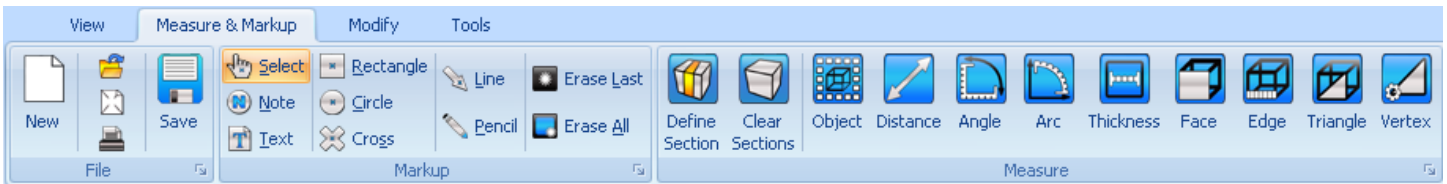
Existing SolidView and SolidView/Pro users under warranty or covered by a Maintenance, Enhancement and Support (MES) agreement are eligible for a free upgrade to Version 2009.

SolidView/Pro 2009 Online Tutorials

To see SolidView/Pro 2009 in action, please visit www.solidview.com/tutorials.html.

What's new in SolidView V2009:

Optional Ribbon User Interface



The new ribbon control in SolidView 2009 allows quick access to the most popular SolidView functions in four logical groups: View, Measure & Markup, Modify and Tools. Full menus are available from the ribbon or you can select the classic SolidView menu:



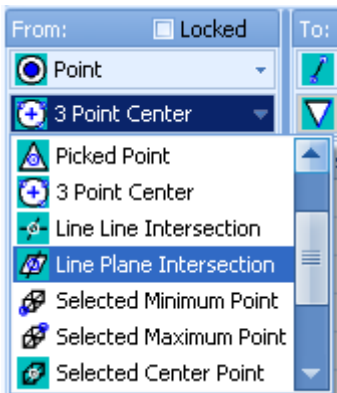
Quick Access Toolbar



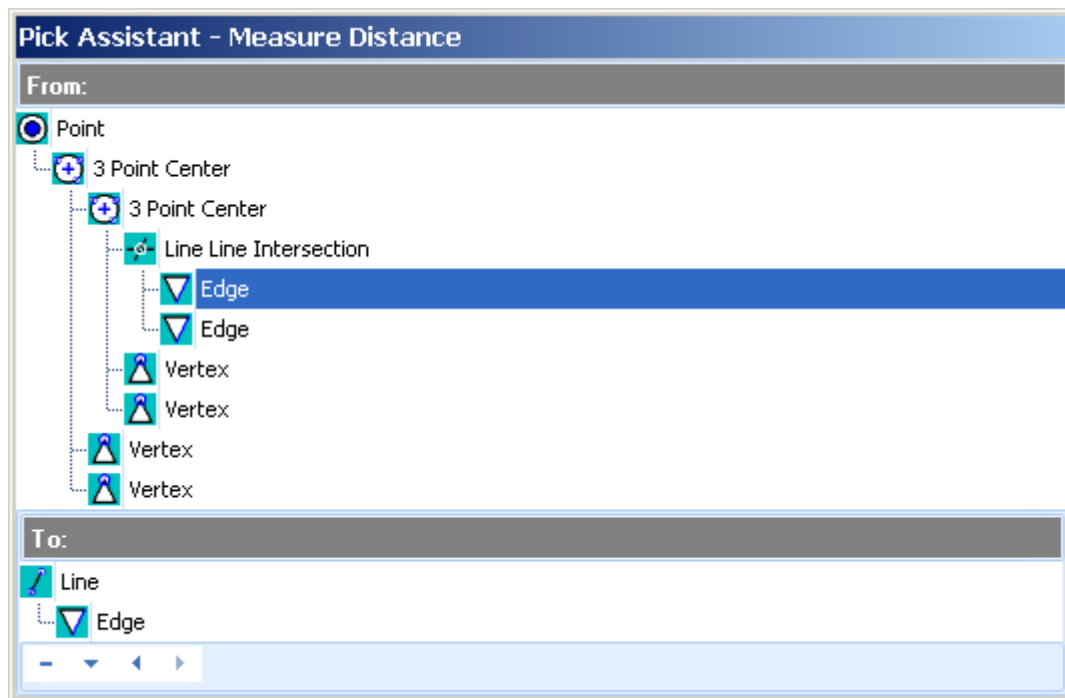
The Quick Access Toolbar allows you to easily customize by letting you add any tool buttons.

Pick Control

SolidView 2009 includes a new pick control that provides unlimited flexibility in selecting geometric features for measurement and modify functions. For example, you can define a line by selecting two points and each point can be defined by selecting a point, entering a value, the center of an arc, etc. The recursive nature of this

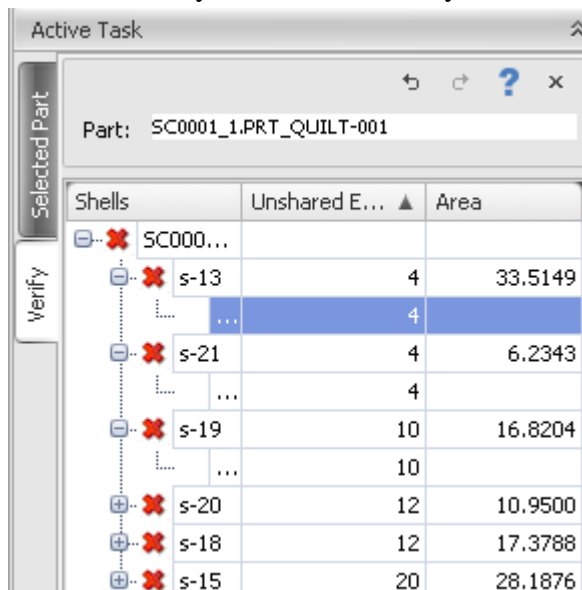


control, along with the Pick Assistant, makes it possible to select geometric features that were difficult or impossible to select in earlier versions of SolidView.



Verify Tool

The new Verify Tool makes it easy to identify Shells and Unshared edges in STL files.



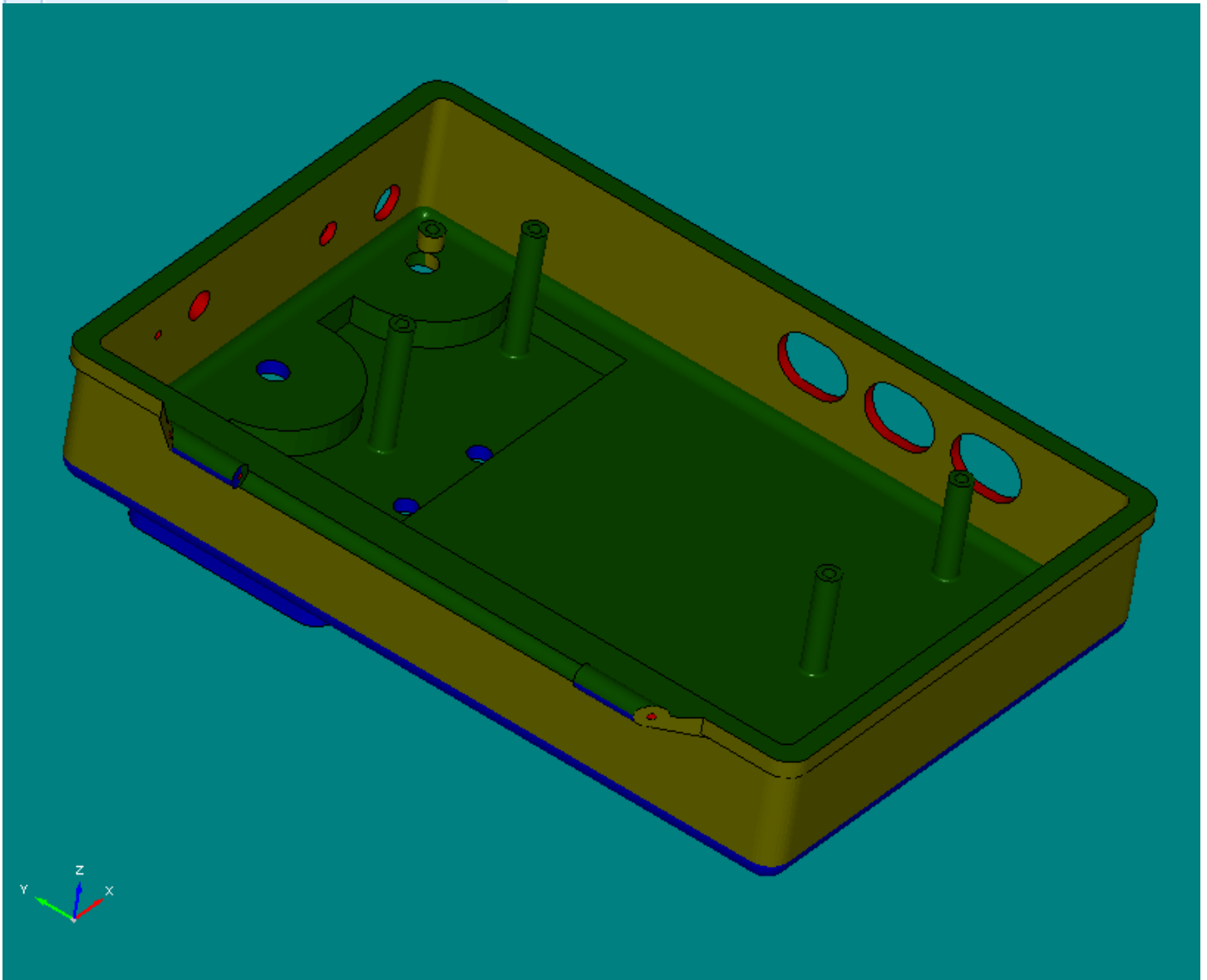
Mold Analysis

SolidView/Pro's Mold Analysis feature identifies the core and cavity, as well as any vertical and undercut surfaces in a 3D model. The analysis legend indicates the total surface area in each group, making it easy to quickly identify any problem areas.

Mold Analysis

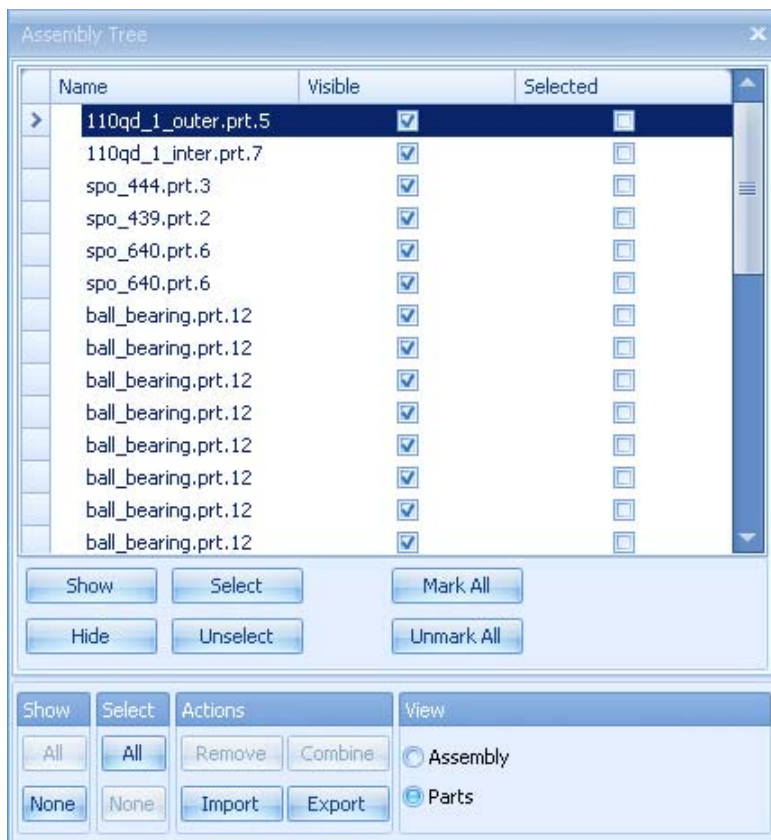
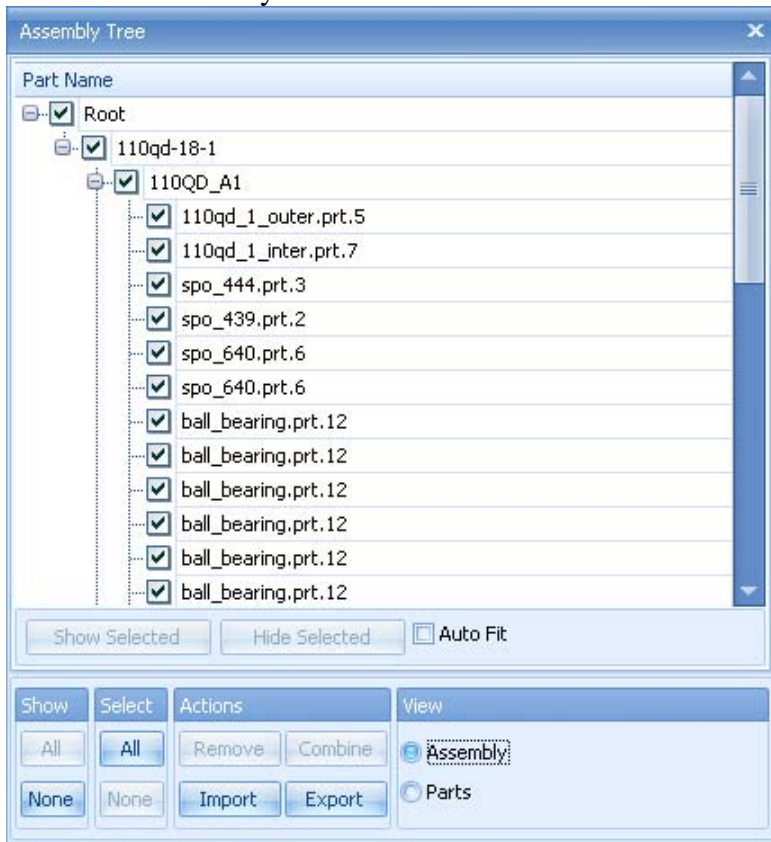
Include Vertical Surface
 Include Undercut

Type	Area, in ² □	Color
Core	248.15	■ 13, 7...
Cavity	237.35	■ 0, 0, ...
Undercut	15.07	■ 178, ...
Vertical	174.03	■ 102, ...
Unknown	0.00	■ 178, ...



Enhanced Assembly Tree/Part List

The Assembly Tree display and Show/Hide dialog from previous version of SolidView have been incorporated into a new Assembly Tree:



SolidView 2009 Summary

SolidView 2009 is a completely new implementation of the most popular SolidView features along with some new analysis tools designed to make it easier to access the manufacturability of complex shapes. SolidView 2009 was designed to be the foundation for an expanded SolidView family of products that will take advantage of Microsoft's .Net architecture. Eventually this will include light-weight web viewers and specialized analysis tools.

SolidView 2009 Supported Features

3D file formats	All popular CAD interfaces are supported (see www.solidview.com for details).
View controls	New rendering modes and ability to change "rotate about" part when viewing an assembly.
Measuring	New Pick Control provides expanded measurement flexibility.
Markups	A full 3D mode is available for markups.
Text	Rich Text support.
Modify	New Pick Control provides expanded flexibility.
Slide Save and Replay	Single views can be saved in SolidView 2009.
SolidView file format	SolidView 2009 uses a new SVD (SolidView Document) file format instead of the SFX format used in SolidView 2008. SolidView SFX files must be read using SolidView 2008.

SolidView 2009 Planned Enhancements

2D file formats	SolidView/Pro 2008 level support will be implemented in SolidView/Pro 2009.1.
RP Tools	Coming soon in SolidView/Pro RP version 2009.1.
Multiple Slide Save and Replay	Enhanced capability in SolidView 2009.1.
SFX File reader	Import SFX file into SolidView/Pro 2009.1.

2009 Known Issues:

Please visit www.solidview.com for a list of known SolidView/Pro 2009 issues.